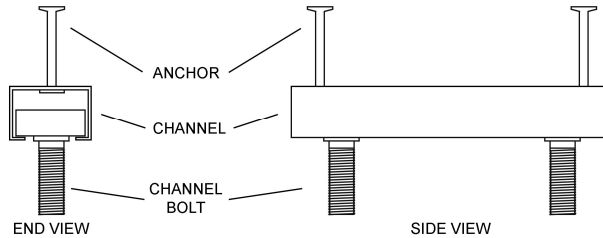




SAMPLE SPECIFICATION: CAST-IN CHANNEL



SCOPE

This sample specification provides guidance to help develop an accurate and complete specification for cast-in channel for use in concrete. This document is a guide only and should not be considered a suitable substitute for material provided in the manufacturer’s installation instructions accompanying a product.

IMPORTANCE OF CORRECT SPECIFICATION

- Incorrect installation may prevent the anchor from functioning as intended.
- A complete and accurate specification is necessary to ensure the contractor purchases the correct product and so that the installer adopts the correct installation practice.
- Failure of an anchor may cause severe injury, economic loss and in some circumstances, loss of life.

MINIMUM INFORMATION TO BE SPECIFIED

The anchor shall be installed according to manufacturer’s instructions. Always refer to manufacturer’s installation instructions for a complete list of items to be included in the specification.

Channel	Part number:		Length:	
	Width:		Finish:	
	Height:		Number of anchors:	
	Total height (channel + anchor) :		Smooth or toothed:	
Special screw	Part number:		Material finish:	
	Thread diameter:		Material grade:	
	Length:		Smooth or toothed:	
	Quantity required:		Tightening torque:	
Concrete	Minimum strength:			

NOTES

The anchor shall be installed according to manufacturer’s instructions. The setting tools (including sockets etc.) shall be used as per the manufacturer’s installation instructions.

CHANGE MANAGEMENT

The proper change management procedure must be followed if an alternative anchor is proposed. An alternate anchor should not be deemed a satisfactory substitute without the written consent of the designer/specifier.